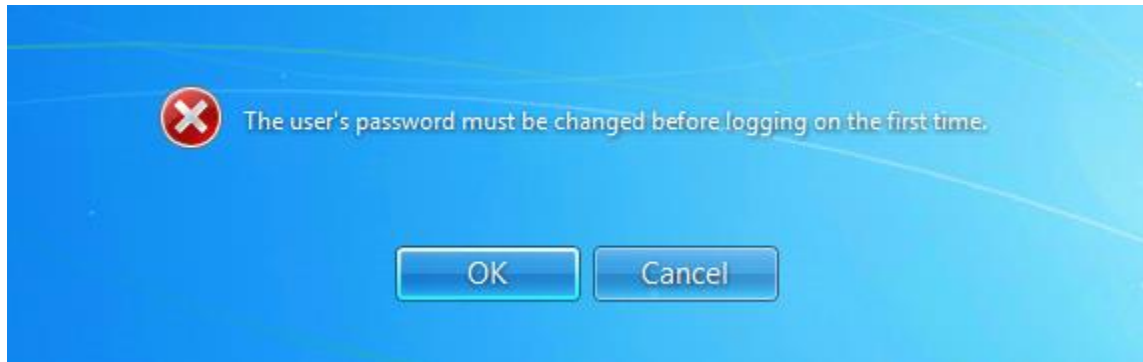
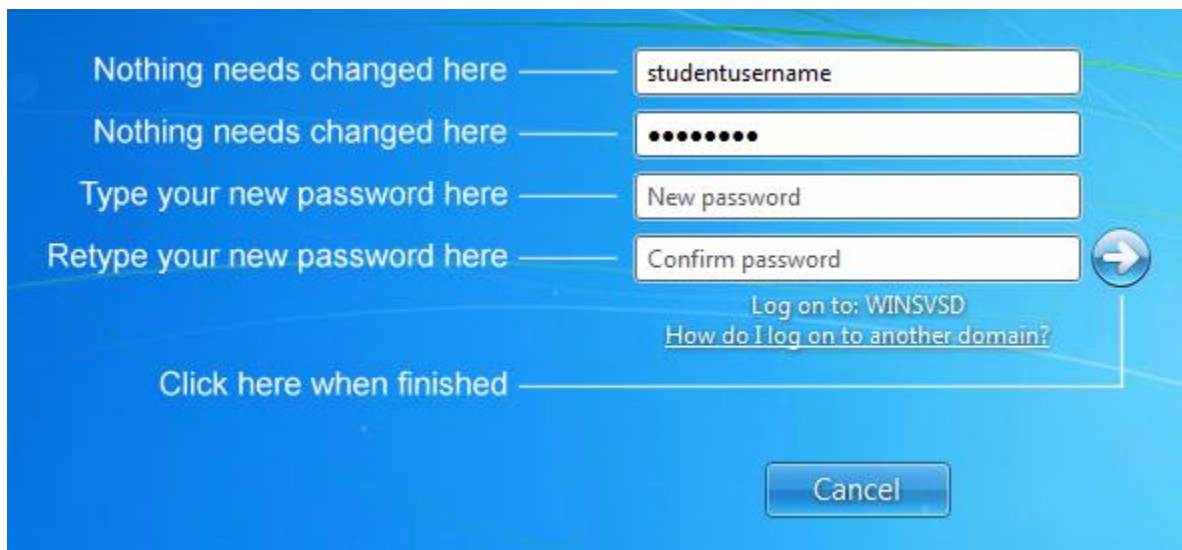


## Student Password Reset Instructions

- After a teacher has reset your password, your password will revert to your student ID.
- To change your password, log on to a network computer with your username and student ID.
- You will be prompted to change your password. Click OK.



- Type your new password into the new password and confirm password fields. Click the arrow button when finished.



### The new password:

- must contain at least one upper case letter
- must contain at least one lower case letter
- must contain at least one number or special character, such as !@#\$\$%^&\*()-+
- must be at least eight characters in length
- may not contain any of the student's three previous passwords
- may not contain the student's name
- may not contain the student's ID number